



# 2022 CATALOG



# About Plexi-Chemie

*PlexiQuartz flooring system installed in a university restroom*



For over 20 years, Plexi-Chemie has been the Southeast's premier manufacturer of resinous flooring and wall systems. We have taken our more than 40 years of extensive field knowledge and created products that best fit the flooring contractor's needs, at prices that outshine the competition.

We offer an array of products to fit all of your industrial and commercial epoxy flooring needs. Our product line includes primers & sealers, membranes & crack fillers, resurfacers, performance topcoats, and our eco-friendly products, perfect for any LEED project. We also offer high chemical resistant epoxies, urethane topcoats, and urethane mortar flooring systems for heavy industrial environments.

Our floors stand up to rigorous industrial and commercial environments, are easy to maintain, sanitary, and are safe with a non-skid finish.

Plexi-Chemie knows that you want a product that not only exceeds your client's expectations, but yours as well. We've been there and know exactly what you need as an installer.



## Table of Contents:

- Flooring Systems
- Wall Systems
- Standalone Coating Products
- Epoxy Repair Products
- Tools and Accessories
- Color Charts
- Support



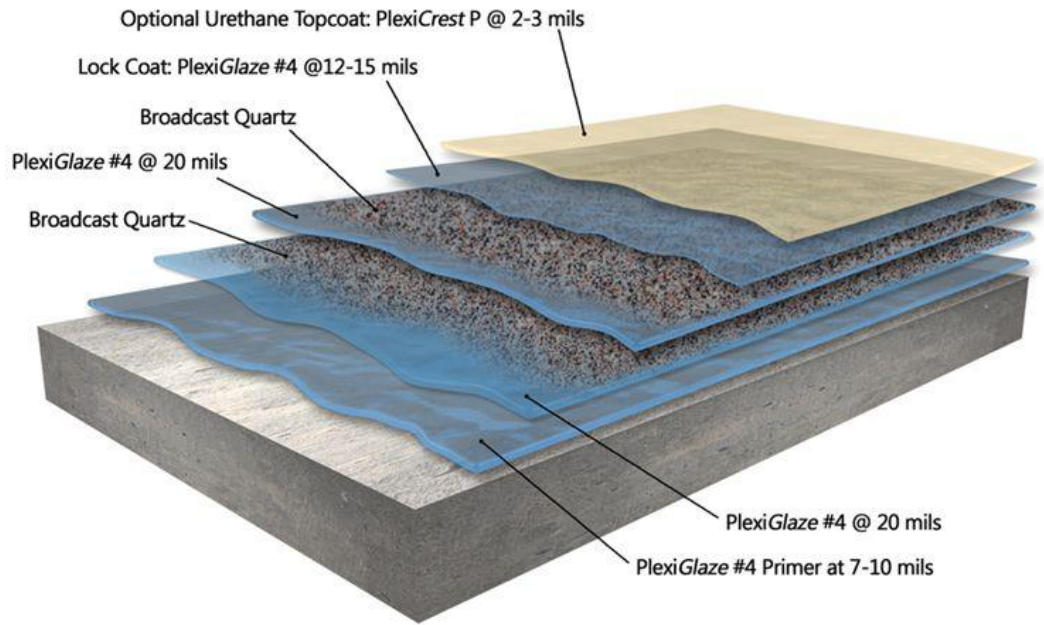
*Contractor troweling Plexi-Chemie coating*



# Epoxy Flooring Systems

## PlexiQuartz Seamless Epoxy Quartz Flooring System

PlexiQuartz is a 100% solids clear epoxy resin and colored quartz flooring system, which is installed at a nominal thickness of 1/8th inch. This broadcast quartz flooring system, is both slip-resistant and aesthetically pleasing. This quartz system, when broadcast, yields a skid resistant and an aesthetically pleasing surface.

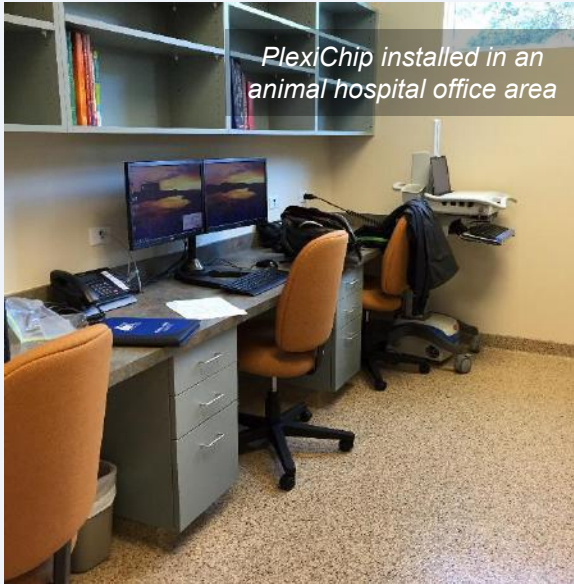




# Epoxy Flooring Systems

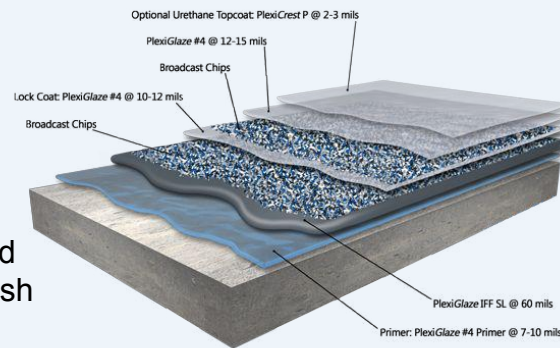
## **PlexiChip** *Seamless Decorative Chip Flooring System*

*PlexiChip installed in an animal hospital office area*



PlexiChip is a decorative, “poured in place” resinous flooring system comprised of 1/4 or 1/8th inch decorative chips incorporated into clear PlexiGlaze #4 or pigmented PlexiGlaze IFF. This system is typically sealed with PlexiGlaze #4, followed by a topcoat of PlexiCrest P Urethane Topcoat. For additional thickness and faster turnaround time, specify PlexiCrest XP Polyaspartic Topcoat. PlexiChip systems are best used for commercial applications.

PlexiChip floors provide a terrazzo-like appearance with the benefits of a seamless floor. These floors require no waxing and are easily cleaned. Long term care of PlexiChip floors can be done with renewed additional topcoats. Surface finish can be smooth or slip resistant.



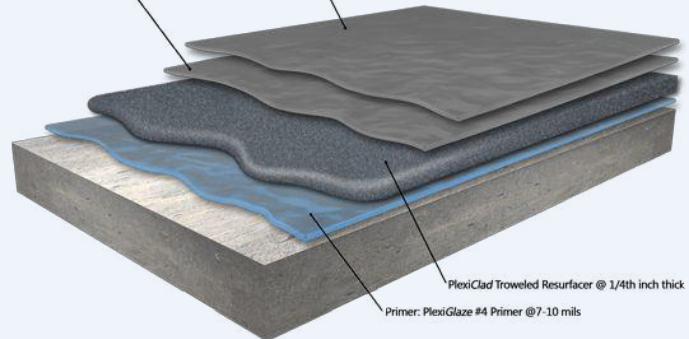
## **PlexiClad** *Epoxy Troweled System*

PlexiClad is a 100% solids, resin-rich, power or hand troweled epoxy resurfacer. PlexiClad is installed at a thickness of 1/4". It is designed to rehabilitate worn concrete and as a protective overlayment on new concrete, while offering superior protection from heavy-duty industrial traffic (impact, abrasion and compaction resistant). The surface texture can be modified to offer varying degrees of slip and chemical resistance in wet environments.



Lock Coat: PlexiGlaze IFF @ 12-15 mils OR Optional Urethane Topcoat: PlexiCrest P @ 2-3 mils

PlexiGlaze IFF, Standard or O.P. (Orange Peel) @ 10-15 mils



### Industries Served:

- Canning and Bottling Facilities
- Chemical Processing Facilities
- Automotive Facilities
- Food and Beverage Manufacturing
- Bus Stations
- Truck Bays
- Wastewater Treatment Facilities
- Power Plants
- Breweries
- Warehouse aisles

# Urethane Mortar Systems

## PlexiCrete HD Urethane Mortar Flooring System

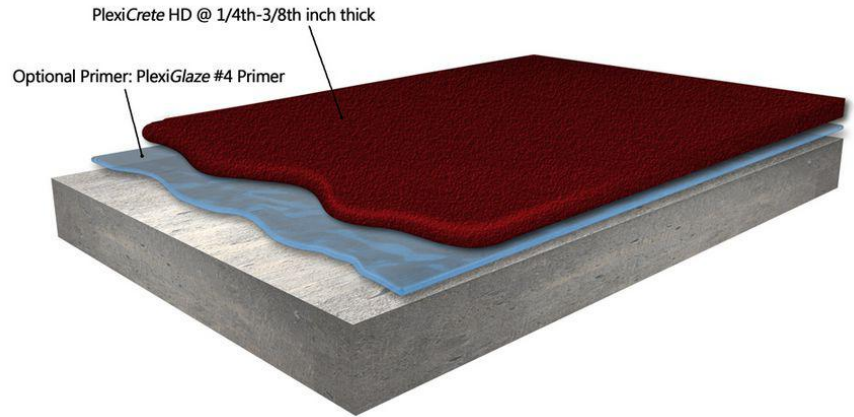
**PlexiCrete HD** (shown to the right) is a heavy duty, four component, 100% solids, high-performance urethane mortar resurfacer flooring system.

**PlexiCrete SLBQ** is a four-component, 100% solids, high performance, **decorative** urethane mortar resurfacer system.

The PlexiCrete family of flooring systems are comprised of urethane resin and hardener, pigment, and special blended aggregate.

### Industries Served:

- Correctional Facilities
- Industrial Facilities
- Food and Beverage Manufacturing
- Industrial and Commercial Kitchens
- Pulp and Paper Manufacturing
- Petro-Chemical Facilities
- Restaurants
- Wastewater Treatment Facilities
- Breweries



**AWARD WINNER**  
WINNER OF THE USGBC BEST OF BUILDING AWARD

*Other variations of our PlexiCrete flooring system are available.*

*Visit [www.plexi-chemie.com/resurfacers](http://www.plexi-chemie.com/resurfacers) for details.*



# Wall Systems:

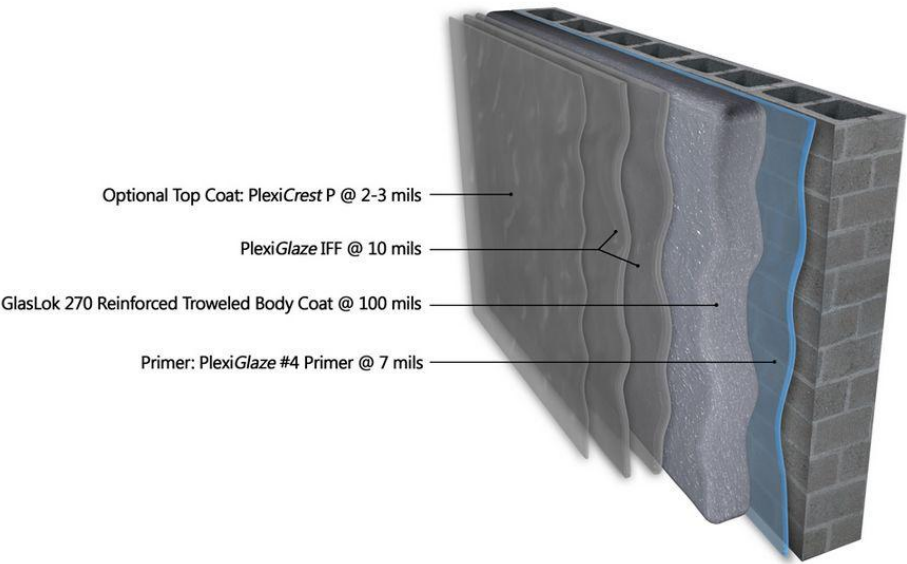
# GlasLok 170 & 270



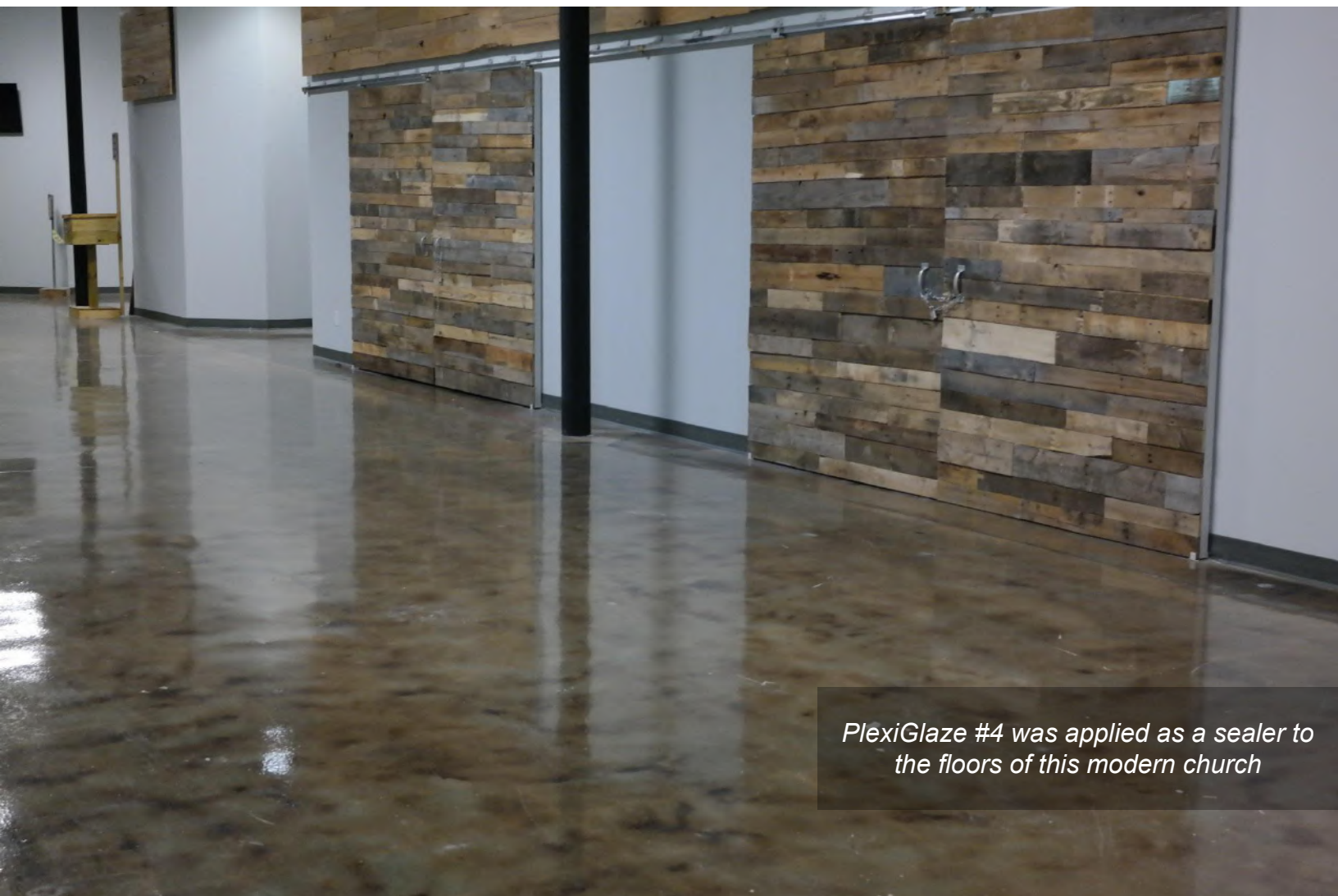
GlasLok 270 was applied to the showers of a correctional facility

**GlasLok 170** is a high performance, milled reinforced fiberglass wall system, designed to repair and protect masonry, drywall surfaces, and secondary containment applications. The system is installed @ 40 mils. Available in our standard colors.

**GlasLok 270** (shown to the right) is a chopped strand, fiberglass reinforced, 100% solids wall coating system. This wall system is designed for new installation and for the restoration of damaged and abused wall surfaces including concrete block, drywall, and poured in concrete walls. GlasLok 270 incorporates fiberglass chop strand to replace the traditional fiberglass mat layup system. This system is installed @ 120 mils. Available in our standard colors.



# Products: Epoxy Primers and Sealers



*PlexiGlaze #4 was applied as a sealer to the floors of this modern church*

## **PlexiGlaze #4** **Clear High Performance Epoxy**

PlexiGlaze #4 is a 100% solids, USDA accepted, water-clear epoxy flooring resin designed for decorative colored quartz, decorative broadcast flake, as a binder for mortar floors and as a primer/sealer for concrete. PlexiGlaze #4 can also be used as a primer, body coat and sealer for walls. PlexiGlaze #4 is non-blushing and non-water spotting, bonds to cold, damp surfaces, and supports heavy industrial traffic. Although it cures into a very hard solid, it does not become brittle but retains a sufficient amount resilience to withstand impact and vibration. This product is resistant to fungus, mildew, and is anti-microbial.

### TYPICAL USES:

- **Primer**
- **Sealer**
- **Binder**
- **Body coat**
- **Used in a variety of Plexi-Chemie flooring systems**



# Products: Epoxy Coatings

## **PlexiGlaze IFF** Pigmented Industrial Floor Coating

PlexiGlaze IFF is a 100% solids, low VOC, USDA accepted, pigmented, heavy-duty floor coating designed for industrial and commercial applications. PlexiGlaze IFF is non-blushing and non-water spotting, bonds to cold, damp surfaces, and supports heavy industrial traffic. Although it cures into a very hard solid, it does not become brittle but retains a sufficient amount resilience to withstand impact and vibration.

PlexiGlaze IFF is resistant to fungus, mildew, and is anti-microbial.



*PlexiGlaze IFF was applied to this  
Navy storage facility*



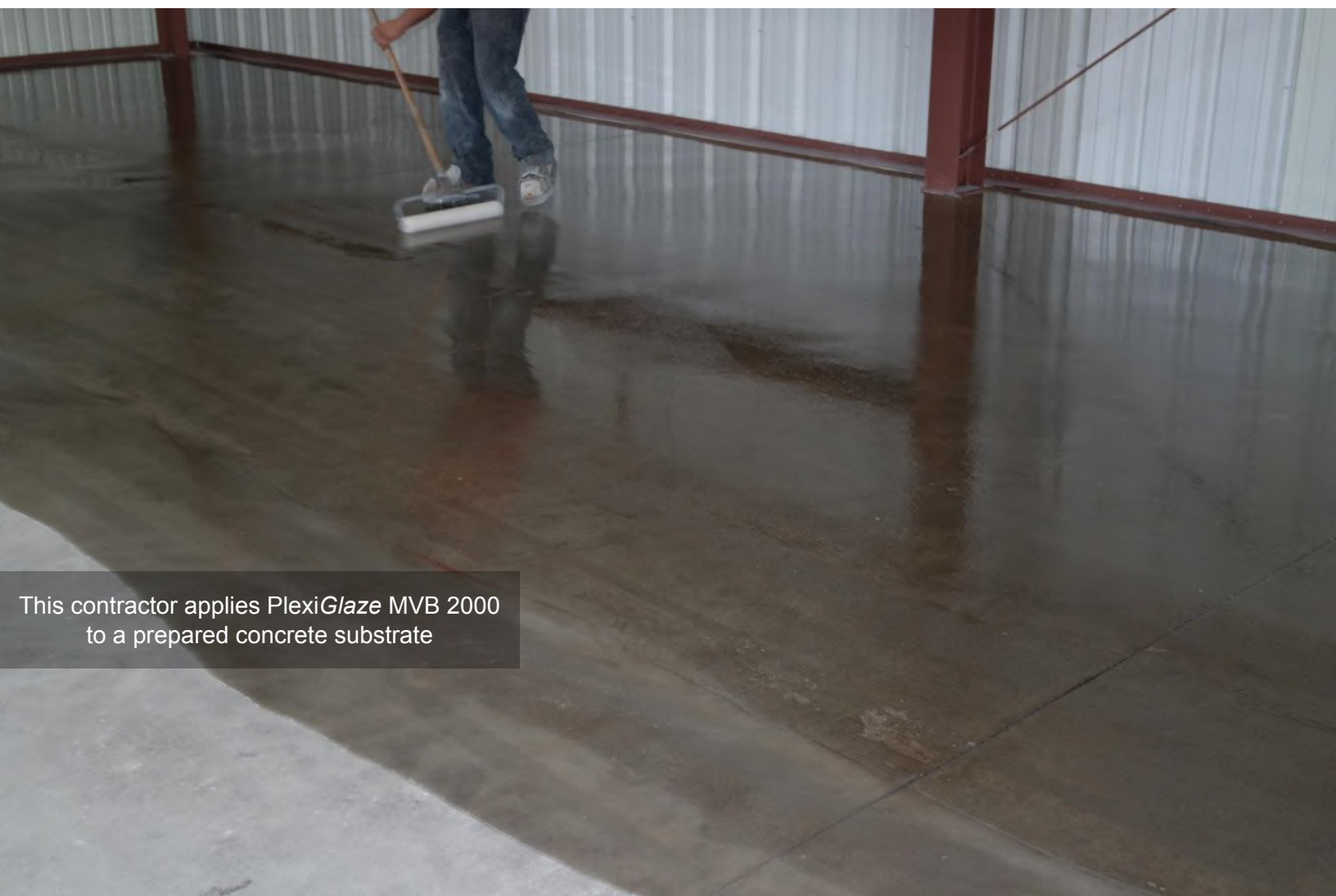
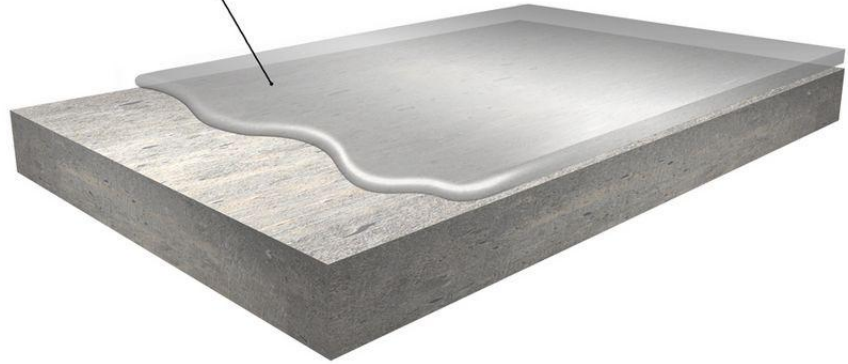
# Products: Moisture Mitigation Coatings

## PlexiGlaze MVB 2000

### A system for the reduction of moisture vapor emissions

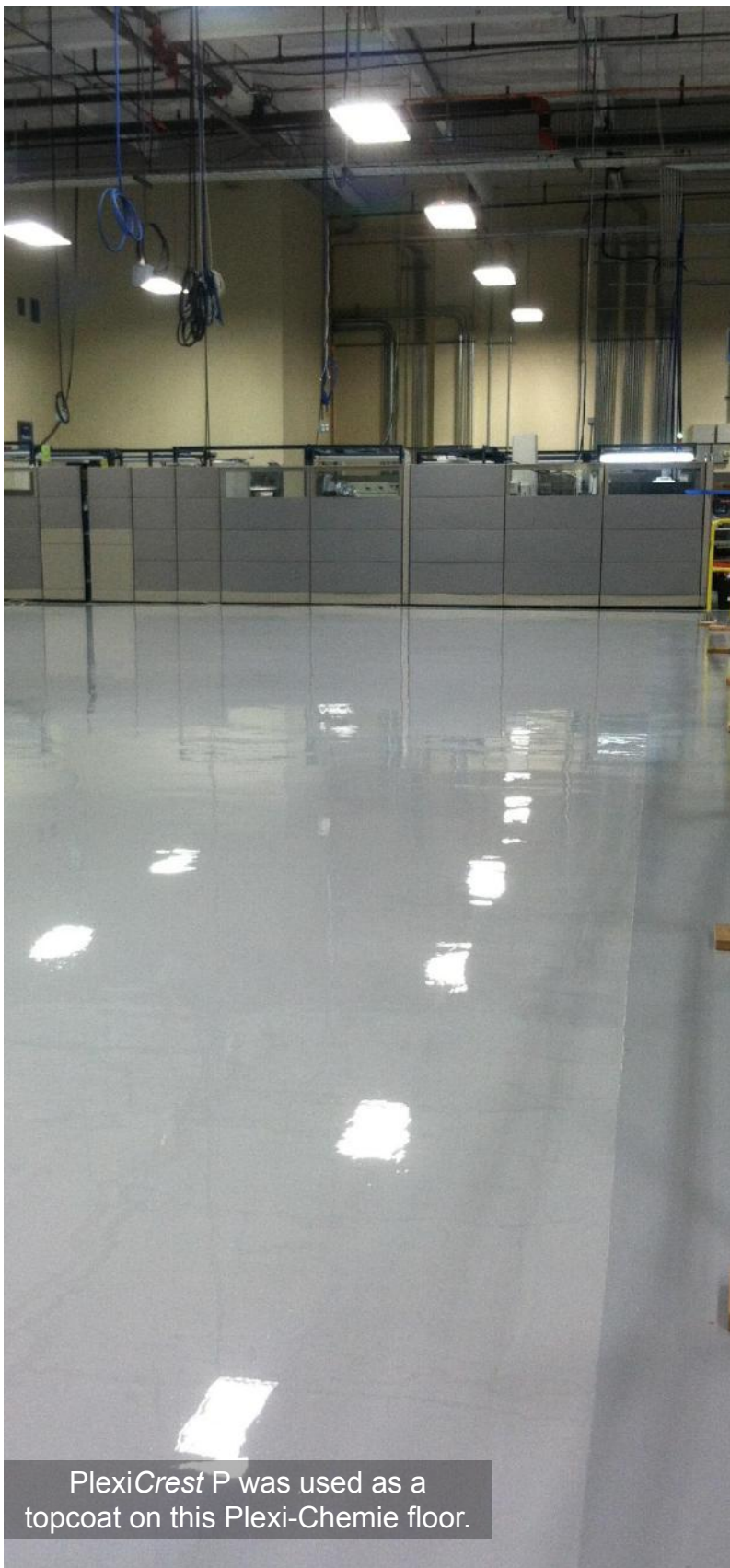
PlexiGlaze MVB 2000 is a one-coat system which consists of a unique combination of epoxy resins and other chemical substances. It is specifically formulated to overcome the inferior adhesion properties of most resin based systems when curing in an environment of constant wetness, extreme alkalinity (pH 13-14) and water vapor drive. **Because of its extreme density it is capable of reducing water vapor and moisture to levels acceptable for most coatings, adhesives and floor covering systems.** PlexiGlaze MVB 2000 is in full compliance with current VOC regulations.

PlexiGlaze MVB 2000 @ 20-40 mils



This contractor applies PlexiGlaze MVB 2000 to a prepared concrete substrate

## Products: High Performance Urethane Topcoats



### **PlexiCrest P**

#### **Polyester Polyurethane Gloss Finish**

PlexiCrest P is a two-component, high performance, aliphatic polyurethane topcoat. This coating displays exceptional moisture and abrasion resistance, while the hard slick film is easy to clean. PlexiCrest P is sold as either a pigmented or clear topcoat, with a choice of a gloss or matte finish. PlexiCrest P has incredible weathering characteristics and exceptional UV resistance, providing extended service life compared to conventional urethane coating systems.

### **PlexiCrest A**

#### **Acrylic Polyurethane Gloss Finish**

PlexiCrest A is a two-component acrylic polyurethane topcoat. PlexiCrest A provides excellent UV and abrasion resistance, while curing in as little as 4-6 hours.

### **PlexiCrest XP**

#### **Polyaspartic Urethane Coating**

PLEXICREST XP Polyaspartic Urethane, clear or pigmented, is a state of the art high solid, no VOC's, aliphatic polyurea that was developed for UV stable (colorfast) polyurea flooring applications as a primer, body coat, grout coat, top coat or a standalone coating. PlexiCrest XP can also be installed as a clear topcoat over a quartz or flake broadcast system. This new generation polyurea displays fast cure times and excellent adhesion characteristics. PlexiCrest XP is designed to be quick gelling (15 minutes) in order to optimize leveling and wetting properties. This state of the art polyurea elastomeric displays excellent chemical resistance, water insensitivity, and UV resistance (in any color) at a wide range of temperatures. PlexiCrest XP will provide a glossy, smooth finish when fully cured. Aggregate can be broadcast into this self-leveling material to provide a non-skid surface. PlexiCrest XP emits virtually no odors and can be applied indoors with minimal disturbance contributed to high V.O.C. levels found in most epoxies and polyurethanes. This product meets USDA and FDA specifications. PlexiCrest XP can be applied at temperatures as low as minus -30° F and as high as 100° F. When cured, PlexiCrest XP can tolerate temperatures as high as 350° F.

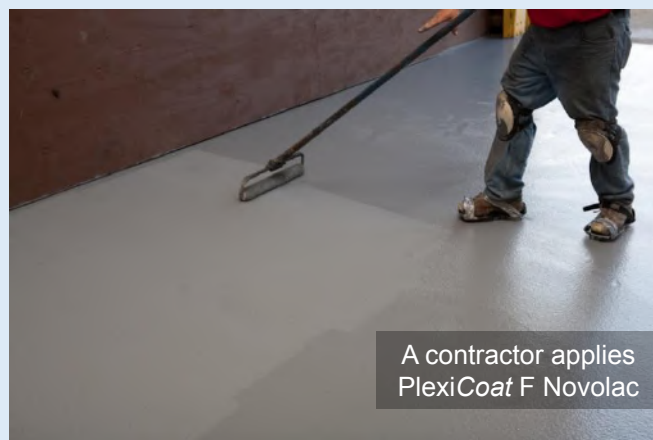
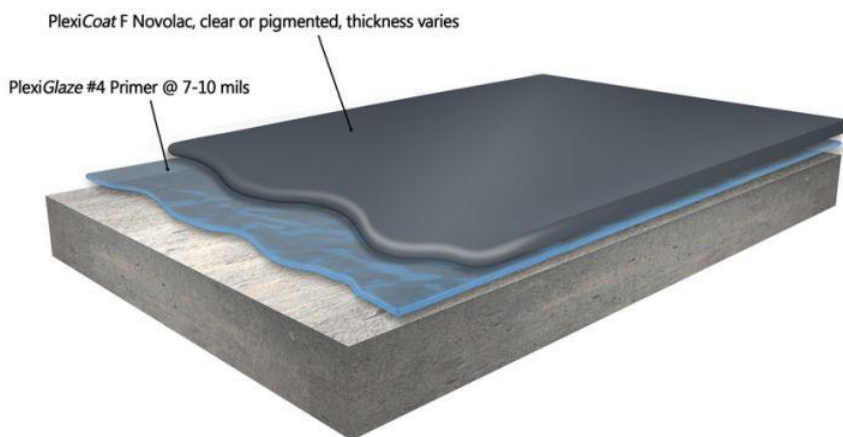
PlexiCrest P was used as a topcoat on this Plexi-Chemie floor.



## Products: Chemical Resistant Novolac Coatings

### PlexiCoat F Novolac

PlexiCoat F Novolac is a chemical resistant novolac epoxy, clear or pigmented, used to coat or line concrete, masonry, or other polymeric surfaces where high chemical and thermal protection is required. PlexiCoat F is designed for service in harsh chemical environments.



# Products: Epoxy Repair Kits

## PlexiPatch QC



If you need to repair cracks, holes or deviations in concrete, OR if you need to fill in floor joints before an epoxy floor is applied, PlexiPatch QC is your go-to patching product. PlexiPatch QC is a multi-purpose, 100% solid, two component patching compound designed for use as a fast repair and setting adhesive on concrete. PlexiPatch QC comes in a regular version, and a flexible version with up to 65% flexibility. Both are 1 to 1 ratio and easy to mix with a 10-15 minute working time at 70° F. Repairs can be sanded, tapped, sawed, drilled, or top coated in as little as 1.5 hours after application.

## PlexiClad Mortar Patch Kit

The perfect solution for **facilities managers**, the PlexiClad Mortar Patch Kit is designed to repair large holes and divots in the floors of your facility.

The PlexiClad Mortar Patch Kit is comprised of:

- 40 lbs. of custom blended mortar aggregate
- 1/2 gallon of PlexiGlaze IFF pigmented epoxy coating PART A
- 1 quart of PlexiGlaze IFF pigmented epoxy coating PART B





# Tools and Accessories



3" & 4" Chip Brushes



Rollers- 9" & 18", 3/8<sup>th</sup> Nap



Stand-up Squeegee, 24 & 36 inch



Mil Squeegee Blade  
Avail. in 5 mil, 10 mil & 20 mil



Poly 3/4 Spike Shoes



Wall Cove Trowel, 3/4 inch radius  
Available in 4, 6, and 8 inches



Roller Frame- 9" and 18"



Powdered Gloves  
Avail. in sizes S-XL

# LEED Information



The Plexi-Chemie team is committed to providing “green” flooring solutions. Plexi-Chemie’s line of earth friendly and sustainable flooring products/systems can help you achieve LEED certification on your next project. Plexi-Chemie is a proud member of the United States Green Building Council (USGBC).



---

Below you can find a breakdown of LEED credits that Plexi-Chemie’s products can provide for your project:

## ***LEED CREDITS – MATERIALS AND RESOURCES:***

### **MR Credit 1: Building Reuse**

Our flooring systems are used for repair and maintenance of existing buildings and minimize impact on new facilities and demolition of old buildings.

### **MR Credit 2: Construction Waste Management**

We minimize impact on landfills because we produce very little waste and we use recycled packaging whenever possible.

### **MR Credit 4: Recycled Content**

Our PlexiBlend system contains recycled glass and aggregate media.

### **MR Credit 6: Rapidly Renewable Materials**

We offer rapidly renewable bio-based materials such as our PlexiCrete resins and some of our epoxy hardeners. These are castor oil derivatives and organic materials.

### **MR Credit 7: Certified Sustainably Harvested Wood**

We use crushed walnut shells in some of our products.

## ***LEED CREDITS – INDOOR ENVIRONMENTAL QUALITY:***

**IEQ Credit 4: Low-Emitting Materials** All of Plexi-Chemie’s products are low emitting materials. They are all VOC compliant.



# COLOR CHARTS

## QUARTZ COLORS



## SOLID COLORS



## CHIP COLORS

1/8" BLENDS



1/4" BLENDS





# SUPPORT

## Available Resources:

- Samples
- Catalogs
- Color Charts
- Safety Data Sheets
- Brochures
- Online installation instructions and videos

## Training and Support:

- Training on all products/systems available
- 24/7 technical assistance available
- Sales representatives available to discuss and/or visit your project

## Plexi-Chemie Service:

- 100% customer oriented service
- Fast responses to all requests
- Will gladly accommodate any custom order or shipping requests



© 2022 PLEXI-CHEMIE, INC. • (904) 693-8800 • [WWW.PLEXICHEMIE.COM](http://WWW.PLEXICHEMIE.COM)

